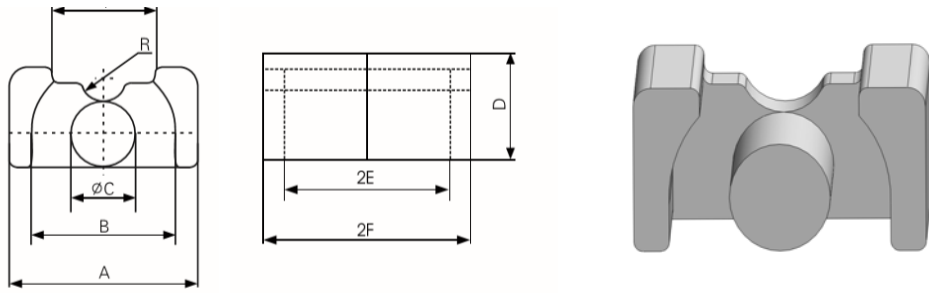




Type : LP Cores



規格 Type	尺寸Dimensions (mm)							
	A	B	C	D	E	F	I	R
LP-16.50-8.70-11.70	16.50+/-0.30	12.50+/-0.30	5.70+/-0.10	8.70+/-0.20	8.70+/-0.10	11.70+/-0.10	9.00+/-0.50	2.5
LP-25.00-12.90-15.90	25.00+/-0.40	19.00+/-0.30	8.60+/-0.20	12.90+/-0.30	12.05+/-0.15	15.90+/-0.10	13.50+/-0.50	3.5

規格 (Type)	磁芯參數				單重 (g/set)	圖號 Fig.
	C1 (mm ²)	Le (mm)	Ae (mm ²)	Ve (mm ³)		
LP-16.50-8.70-11.70	1.410	44.100	31.300	1380.330	9.60	
LP-25.00-12.90-15.90	0.910	64.000	70.300	4499.200	30.00	